

The new Davimast™ anchor point can be used to secure up to two operators weighing 310 lb. (140 kg), or to lift a 500 lb. (225 kg) material load.

It is modular and its size makes it easy to transport in small construction vehicles and to handle.

The Davimast™ mast is made of aluminium with a PA 6 socket. It is equipped with a pin and safety pin connected to the mast by a steel cable.

The Davimast™ anchor point is designed for operators accessing confined spaces, such as silos, sewers or terraces to create a high anchor point.

The Davimast™ mast is an interface between the Davimast™ bases and Davimast™ brackets. It cannot be used alone.

There are three types of Davimast™ brackets:

- the double PPE anchors bracket;
- the Blocfor® bi-directional retrieval lifeline;
- the work winch bracket.

APPLICATIONS

- Rescue
- Confined spaces
- Rope works
- Manholes
- Pits

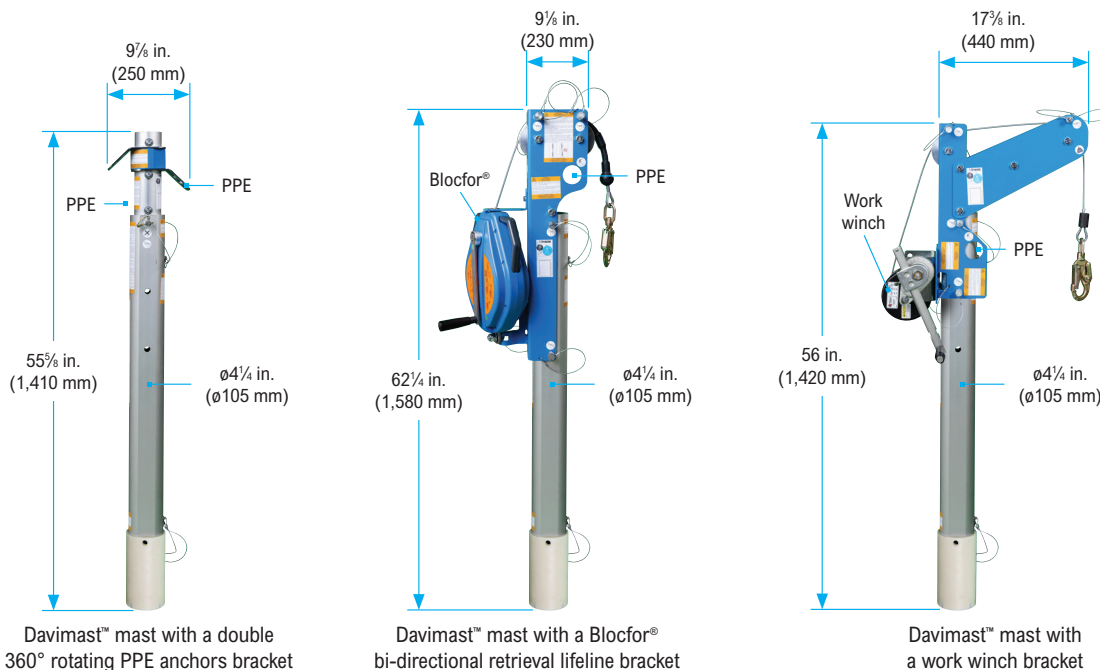
APPLICABLE STANDARDS

The Davimast™ mast is an interface that cannot be used alone. When installed on a permanent Davimast™ adapter and fitted with a bracket, it meets the following requirements:

- Manufactured in accordance with CSA Z259.15-17
- Manufactured in accordance with ANSI Z359.18-17
- Meets or exceeds OSHA



Davimast™ mast



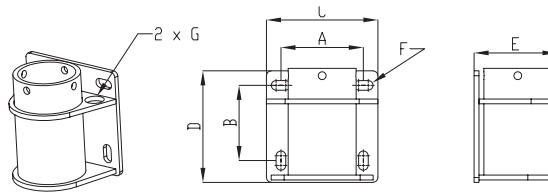
THE ADAPTERS

The Davimast™ adapters are exclusively designed to be installed with the Davimast™, Davitrac™ or Davitrac™+ manufactured by Tractel®. They allow the Davimast™ to rotate 360° in relation to its axis.

They are fixed with four heavy duty chemical anchors with a diameter of 5/8 in. (16 mm). They can be installed without any specific tools and are quick and easy to install.

Wall mounted adapter

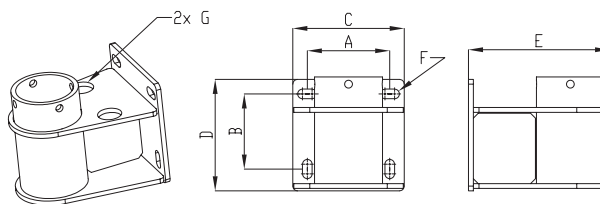
The wall mounted adapter allows the Davimast™ to be installed on a high point access to a vertical surface. It is equipped with two PPE anchoring points of 330 lb. (150 kg) each which can be used by up to two operators to secure themselves when installing the Davimast™.



MATERIAL	WEIGHT	A	B	C	D	E	F
Galvanized steel	29.8 lb. (13.5 kg)	6 5/8 in. (170 mm)	6 in. (155 mm)	9 in. (230 mm)	9 in. (230 mm)	6 5/8 in. (171 mm)	3/4 in. (20 mm)

Clearance mural adapter

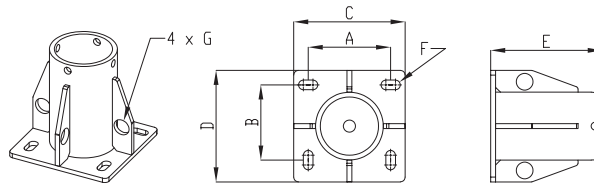
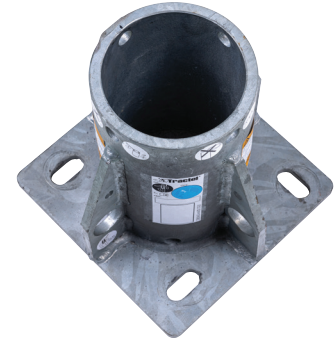
The clearance mural adapter allows the Davimast™ to be installed at any point on a vertical surface. It has an offset of 11 1/2 in. (291 mm) and is equipped with two PPE anchoring points of 330 lb. (150 kg) each, which can be used by up to two operators to secure themselves during the installation of the Davimast™.



MATERIAL	WEIGHT	A	B	C	D	E	F
Galvanized steel	40.8 lb. (18.5 kg)	6 5/8 in. (170 mm)	6 in. (155 mm)	9 in. (230 mm)	9 in. (230 mm)	11 1/2 in. (291 mm)	3/4 in. (20 mm)

Mounted floor adapter

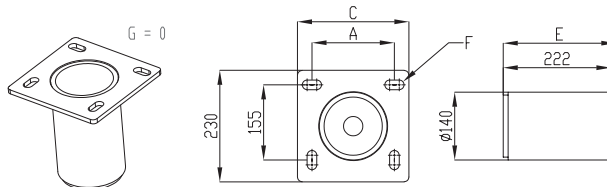
The mounted floor adapter allows the Davimast™ to be installed at any point on a horizontal surface. It is equipped with four PPE anchoring points of 330 lb. (150 kg). A maximum of two operators can be secured when installing the Davimast™.



MATERIAL	WEIGHT	A	B	C	D	E	F
Galvanized steel	27.6 lb. (12.5 kg)	6 5/8 in. (170 mm)	6 in. (155 mm)	9 in. (230 mm)	9 in. (230 mm)	9 in. (230 mm)	3/4 in. (20 mm)

Flush floor adapter

The flush floor adapter allows the Davimast™ to be installed on the floor on a horizontal surface. It is fixed in a concrete slab by drilling a 5 3/4 in. (145 mm) hole. A protective cap is also available for this adapter.



MATERIAL	WEIGHT	A	B	C	D	E	F
Galvanized steel	23.8 lb. (10.7 kg)	6 5/8 in. (170 mm)	6 in. (155 mm)	9 in. (230 mm)	9 in. (230 mm)	9 1/8 in. (232 mm)	3/4 in. (20 mm)

THE BRACKETS

The Davimast™ brackets are exclusively designed to be installed with the Davimast™ manufactured by Tractel®. They give the Davimast™ the versatility needed to be a great asset in any job.

They can be installed without any specific tools and are quick and easy to install.

Double 360° rotating PPE anchors bracket

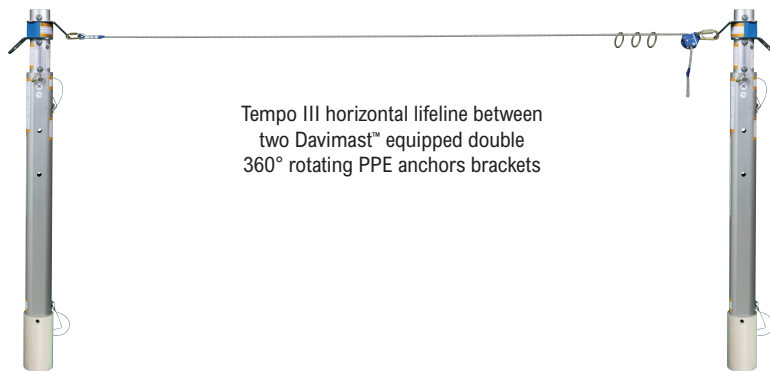
The double 360° rotating PPE anchor bracket is installed on the Davimast™. The two rotating anchor points are tested to connect an operator weighing up to 310 lb. (140 kg) each. They can also be used to attach a Tempo III horizontal lifeline between two Davimast™ equipped with this bracket.

The Davimast™ bracket with two 360° rotating anchors allows up to two operators to work freely around an anchor point. The high position of the Davimast™ bracket reduces the fall distance and makes the use of a fall arrest system more comfortable. Each anchor point is tested for securing an operator up to 310 lb. (140 kg) with his tools.

Each anchor point has been tested to a resistance of 4,000 lb. (17.8 kN). This allows operators to attach a Tractel® Tempo III horizontal lifeline between two Davimast™ equipped with this bracket, 60 ft. (18 m) apart, to secure up to three operators simultaneously.

The Davimast™ bracket with two 360° rotating anchors is made of aluminium with two galvanised steel anchors.

It is fixed to the top of the Davimast™ with a pin and a safety pin fixed to the bracket with a small cable.



Tempo III horizontal lifeline between two Davimast™ equipped double 360° rotating PPE anchors brackets



Davimast™ mast with a double 360° rotating PPE anchors bracket

Blocfor® bi-directional retrieval lifeline bracket

The Blocfor® bi-directional retrieval lifelines with 50 and 100 ft. (15 and 30 m) cable are equipped with a rescue winch. They can be fitted with galvanised or stainless-steel cable. They can be installed on the Davimast™ using a specific Tractel® bracket.

The bracket is equipped with a 310 lb. (140 kg) PPE anchor point dedicated to secure an operator on the surface.

The main advantages of using the Blocfor® bi-directional retrieval lifelines are:

- A very good grip for its transport and installation.
- Simplified maintenance thanks to its optimised design.
- A rescue winch allowing a user weighing 310 lb. (140 kg) to be lifted for galvanized cable or 220 lb. (100 kg) to be lifted for stainless-steel cable devices

FEATURES

- The 50 ft. (15 m) Blocfor® bi-directional retrieval lifeline is equipped with ABS filled polyamide plastic casings, anti-UV, very resistant to shocks and ageing.
- The 100 ft. (30 m) Blocfor® bi-directional retrieval lifeline is equipped with anti-UV aluminium housing, very resistant to shocks and ageing.
- A stop mechanism equipped with two latches that reduce the time of engagement in the brake gear.
- Good ergonomics that ensures a perfect grip.
- An anchor that can receive large diameter connectors.



Work winch bracket

The work winch is only for material lifting of equipment. They meet the requirements for material hoists with a maximum load of 500 lb. (225 kg).

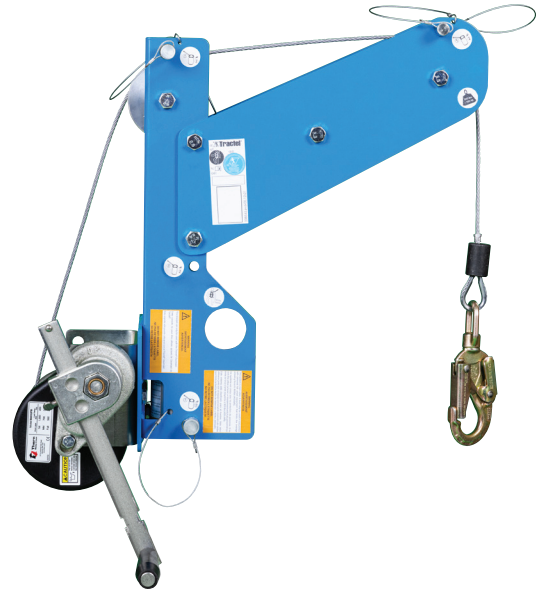
They are delivered with a Davimast™ bracket equipped with a small 11 $\frac{1}{8}$ in. (300 mm) boom and a pulley.

The bracket is equipped with a PPE 310 lb. (140 kg) anchor point dedicated to securing the operator of the work winch.

The work winch is for material lifting only and has been tested for installation to the Tractel® Davimast™. It is supplied with a specific bracket for this purpose.

FEATURES

- Automatic Weston style brake that is a spring-engaged, ratchet-pawl design offers additional reliability and positive load control for lifting and lowering of loads.
- Bronze and radial ball bearings provide smooth and efficient operation.
- Robust drum design and large spool diameter minimize drum wear and extend wire rope life
- Corrosion resistant trivalent zinc plated finish protects against corrosion in harsh environments.
- Protection of users and mechanical parts by an ergonomic protective cover that can be removed for maintenance.
- Quick and easy cable connection
- Adjustable length control handle allowing the user either maximum control force or quick manoeuvring for small loads or rewinding operations
- Precision-cut, zinc-coated steel gears resist corrosion, increase efficiency, and provide accurate and durable operation
- The work winch with its bracket is fixed with two pins to the Davimast™.
- Easily transportable thanks to the crossbar
- Equipped with a mounting bracket for Davimast™



Davimast™ mast
with a work winch
and its bracket

PARTS	DESCRIPTION	WEIGHT
DM3000	Davimast™ mast	
Adapters		
T90DAVI-WMA	Wall mounted adapter	
T90DAVI-CMA	Clearance mural adapter	
T90DAVI-MFA	Mounted floor adapter	
T90DAVI-FFA	Flush floor adapter	
T90DAVI-CAP	Protective cap for flush floor adapter	
Double 360° rotating PPE anchors		
D90A	Double 360° rotating PPE anchors Davimast™ bracket	
Blocfor® bi-directional retrieval lifeline		
T1T50GKDM	50 ft. (15 m) Blocfor® bi-directional retrieval lifeline with galvanized steel wire rope and Davimast™ bracket	
T1T50SKDM	50 ft. (15 m) Blocfor® bi-directional retrieval lifeline with stainless steel wire rope and Davimast™ bracket	
T1T100GKDM	100 ft. (30 m) Blocfor® bi-directional retrieval lifeline with galvanized steel wire rope and Davimast™ bracket	
T1T100SKDM	100 ft. (30 m) Blocfor® bi-directional retrieval lifeline with stainless steel wire rope and Davimast™ bracket	
Work winch		
M4032PB080K	80 ft. (24 m) work winch with galvanized steel wire rope and Davimast™ bracket	
Tempo III temporary horizontal Kernmantle lifeline		
H66500	Tempo III temporary horizontal Kernmantle lifeline	
Accessories		
DTTR1000	Davimast™ transport trolley	
XBDM3000	Davimast™ transport bag	

